



CXDI-Elite Series Specifications

Model name:	CXDI-820C Wireless
Weight (incl. battery):	1.8 kg
Effective imaging area:	27 x 35 cm
External dimensions:	31 x 38 cm
Image matrix size:	2192 x 2800 pixels
Pixel size:	125 µm
Resolution:	4.0 lp/mm
DQE:	Typical 74% (0 lp/mm) / 67% (0.5 lp/mm) ²
Grey scale:	A/D: 16bit
Preview image time:	1 sec. ³
Cycle Time:	4 sec. ³
Dust- and waterproof:	IP57 ⁴
Battery performance:	Standard Synchronisation mode Approx. 2000 images @ 7 sec. cycle, 100 images @ 100 sec. cycle. Non-Generator Connection mode Approx. 1900 images @ 7 sec. cycle, 145 images @ 100 sec. cycle.
Charging performance:	Detector charging in detector stand: approx. 150 min. ⁵ In battery charger: approx. 150 min.
Wireless channel/band:	2.4 GHz, 5 GHz (W52, W53, W56, W58) ⁶



Detector stand



Battery Charger



Wiring Cable



Multi Box



Power Box



PC Connection Cable



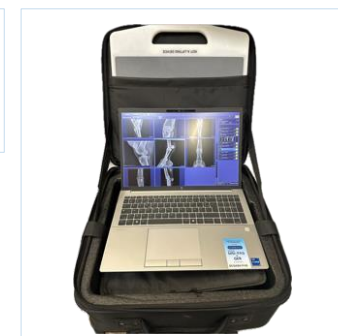
Ready Indicator



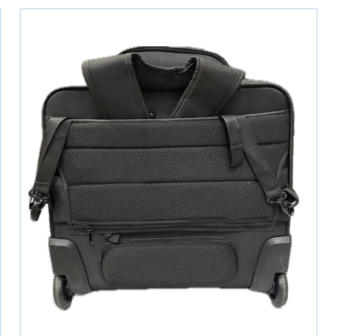
Status Indicator



Battery Pack



Suitcase



DIGITAL RADIOGRAPHY

CXDI-Elite

Canon's state of the art wireless detector line-up takes you to new heights of possibilities in digital radiography. Intelligent NR, built-in AEC assistance, reduced weight, dust and waterproof, on-board memory and enhanced detector design are just a few of the clinically beneficial new features.



Excellent DQE and MTF

- DQE Typical 74%(0 lp/mm)
- MTF Typical larger than 45% (2 lp/mm)

Tough, Durable & Light weight

- From 1.8kg
- High quality materials
- Covers can be exchanged
- Exchangeable batteries

Ergonomic design

- Comfortable hold and grip
- Easier to position
- Less strain for operator
- Easy to clean smooth surface

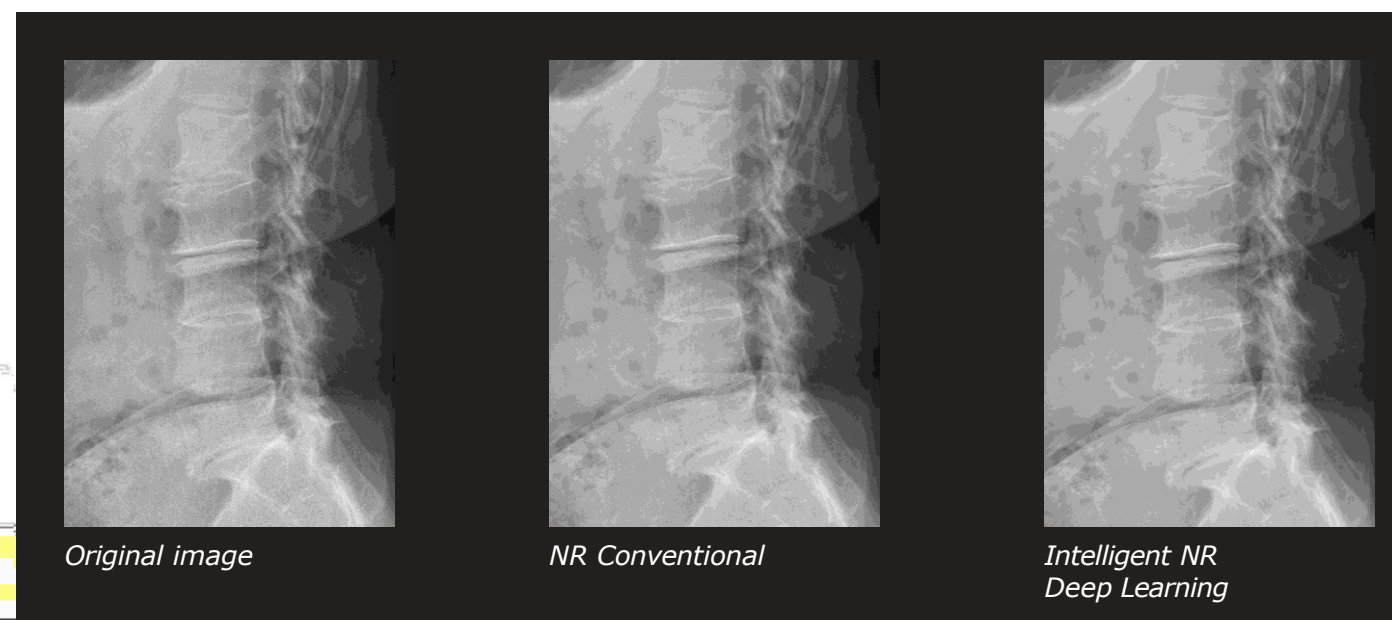
Battery performance

- More than 9.5 hours in stand by mode
- Battery can easily be exchanged



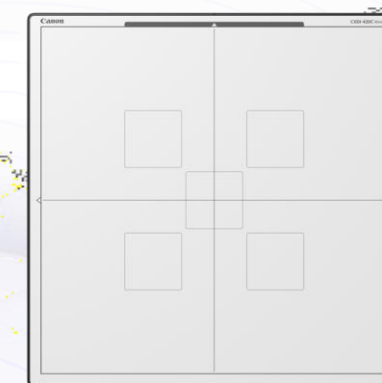
Intelligent **NR** DEEP LEARNING

- Intelligent noise reduction
- Improved image quality
- Possible dose benefit
- Assist diagnosis



Built-in AEC Assistance

- Optimize X-ray dose without external AEC sensor
- Ideal for free positioning
- Auto ROI selection by rotation
- Different ROI patterns can be selected

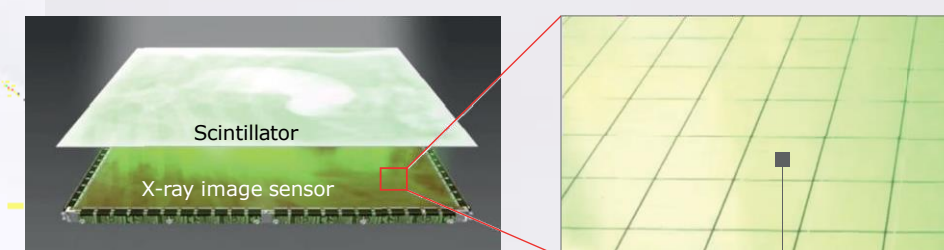


CXDI Control Software NE

- Optimized workflow
- Body parts and customer specific image processing
- Secure
- Optional features like scatter correction, advanced edge enhancement, Intelligent NR, Built-in AEC assistance, etc.



X-ray image sensor



Single pixel of X-ray image sensor

